

# Laundry Powder 2 in 1



## Product Usage Guide




enviro



### BP022

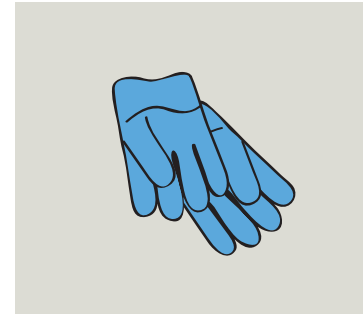


#### Recommended Dosage

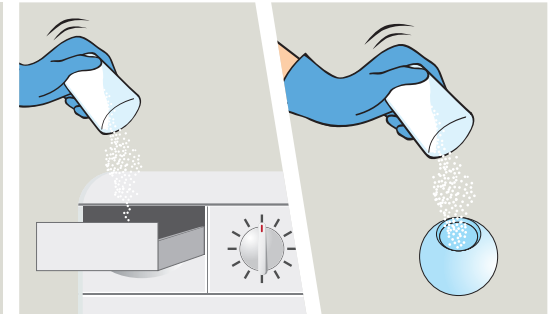
| 4.5kg          | Soiling                                                                           |                                                                                   |                                                                                    |
|----------------|-----------------------------------------------------------------------------------|-----------------------------------------------------------------------------------|------------------------------------------------------------------------------------|
| Water Hardness |  |  |  |
| Soft           | 110ml                                                                             | 135ml                                                                             | 190ml                                                                              |
| Medium         | 135ml                                                                             | 150ml                                                                             | 220ml                                                                              |
| Hard           | 150ml                                                                             | 190ml                                                                             | 250ml                                                                              |

**For 6-7kg machines:**  
Add an additional 25ml of powder to the recommended dosage.

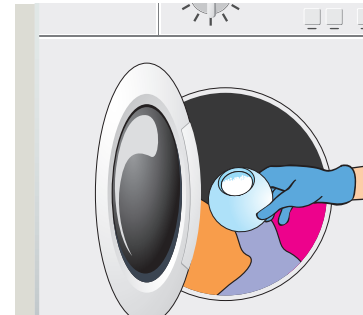
**Pre-wash**  
Add an extra 80ml of powder.  
110ml = 81g



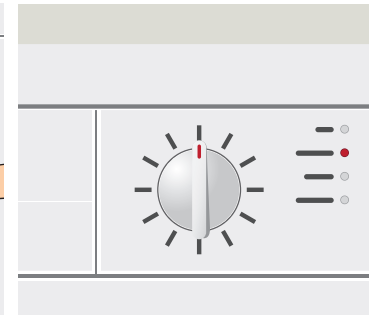
**1** Use appropriate PPE as indicated in the Safety Data Sheet.



**2** Pour the recommended amount of powder either into the dispenser drawer or into a dosing device.



**3** If using a dosing device, place in upright position on top of the laundry inside the washer.



**4** Select wash cycle and start.

#### Health & Safety

Please refer to relevant COSHH Safety Data Sheet



Scan for further product details



Do not use enamel bath for soaking. Never soak silk, wool, leather and garments with metal fastenings or flame resistant finishes. Always test coloured articles for colour fastness. If not colour fast wash separately.