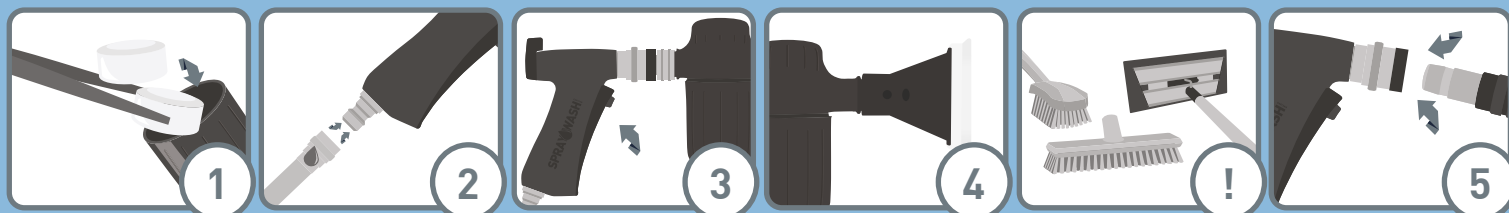




SPRAYWASH EASYSAN

Cleaning made easy!

HOW TO USE SPRAYWASH



1
Place 1 tablet in the SprayWash tablet container.

2
Connect to hose.

3
Pull the trigger.

4
Spray desired surfaces thoroughly and let it work. Avoid drying out on the surface.

!
If necessary; Scrub the surfaces manually.

5
Rinse thoroughly with cold water.



5 - 45°



2-5 BAR / 29-72 PSI



TURN AND REGULATE DOSING WITH EASE

REMEMBER

- Follow instructions for correct use
- Water pressure between 2-5 bar (normal water pressure)
- Ensure good ventilation/fresh air
- Use practical clothing
- Keep distance to surfaces you spray
- Only use original SprayWash tablets
- Keep tablets dry, cool and away from sun and heat
- Apply grease/oil on couplings periodically

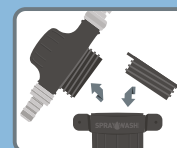
Instructions video at www.spraywash.eu

IMPORTANT INFORMATION – handling after usage!

SprayWash must be drained after use – or by breaks of more than 10 minutes.

Empty the content into a drain/container. Rinse with clean water where you drain SprayWash. Rinse SprayWash with water. **Be careful:** Concentrate may discolor clothing etc.

Unscrew tablet container. Screw the lid on. If there is more tablet remaining it has to stay in the tablet container until next time you use SprayWash.



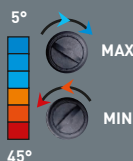
CLEANINGTAB 1
Periodic descaling
SPW.TAB18.1 / SPW.TAB18.1P (parfume)
SPW.TABKIT.4 tablet kit.



CLEANINGTAB 9
Daily and heavy cleaning
SPW.TAB18.9 / SPW.TAB18.9P (parfume)
SPW.TABKIT.3 tablet kit.



CLEANINGTAB 12
Daily / heavy cleaning in food sector and industry.
SPW.TAB18.12 / SPW.TAB18.12P (parfume)
SPW.TABKIT.7 tablet kit.



CHLORTAB EXTRA
Chlorine disinfection of surfaces
SPW.TAB18.CH
SPW.TABKIT.5 tablet kit.



DESTAB
Oxidizing disinfection of surfaces
SPW.TAB18.DE
SPW.TABKIT.6 tablet kit.



Nito



Click / Gardena



www.spraywash.eu