

# \* Glasswash Detergent

Jangro \*



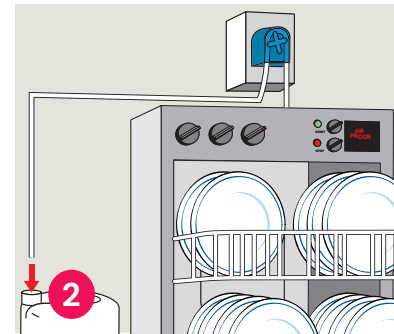
## BB124-5



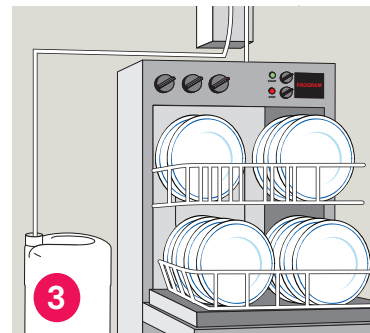
Automatic Dishwashing Machines:



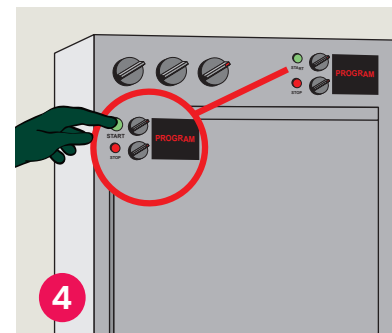
1 Place safety Sign & use the appropriate PPE as indicated in the Safety Data Sheet.



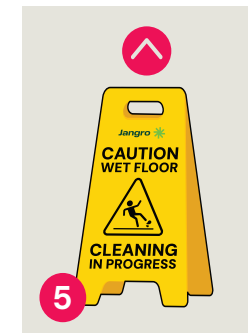
2 Connect the product to an electronic dosing system following the manufacturer's instructions.



3 Product should be diluted at the rate of 1-4ml of detergent per litre of water depending on soiling and hardness of water.



4 Select programme and press start.



5 Remove Safety Signs.

### Areas for use



### Health & Safety

Please refer to relevant COSHH Safety Data Sheet

[www.jangro.net](http://www.jangro.net)

Scan QR code for further product details



Do not use on aluminium, zinc, or other alloys.  
Not to be used for hand dishwashing.

Professional



Product Usage Guide