

# Toilet Descaler



When dosing concentrate chemicals always use the recommended PPE, and always read the labels to check best practice for handling both the undiluted & ready to use solutions.

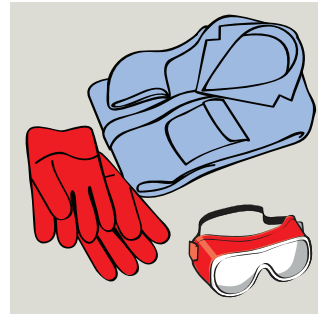
## Product Usage Guide

### Professional



### BC051-5

#### Toilets & Urinals



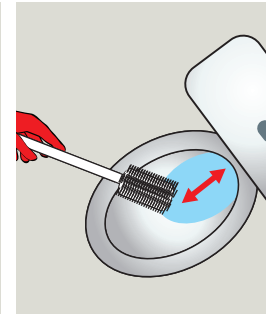
**1** Use appropriate PPE as indicated in the Safety Data Sheet.



**2** Place Safety Signs.



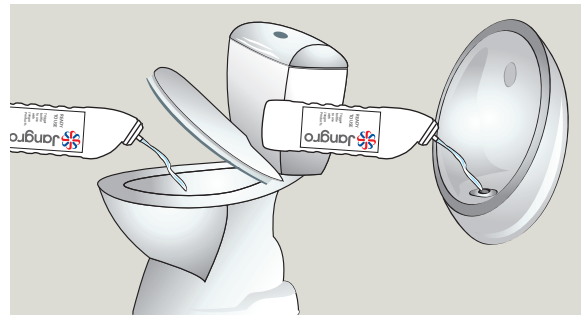
**3** Flush toilet.



**4** Push back water.



**5** Carefully fill an empty 1 litre bottle with Toilet Descaler (undiluted).



**6** Apply to the urinal and toilet bowl. Can be left for up to 15 mins for stubborn descaling.



**7** Agitate with brush if necessary.



**8** Flush with clean water.



**9** Remove Safety Signs.

#### Health & Safety

Please refer to relevant Safety Data Sheet



Scan for further product details



Not for use on or near enamel, chrome, stainless steel, marble, terrazzo, stone, linoleum or plastic floors etc.

[www.jangro.net](http://www.jangro.net)