

## Product Usage Guide

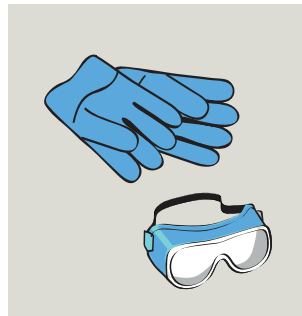
Professional



### BG240-5



Can be used concentrated or diluted with up to 5 parts of water.



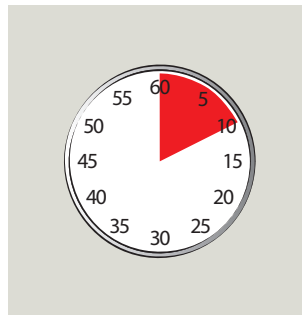
**1** Use appropriate PPE as indicated in the Safety Data Sheet.



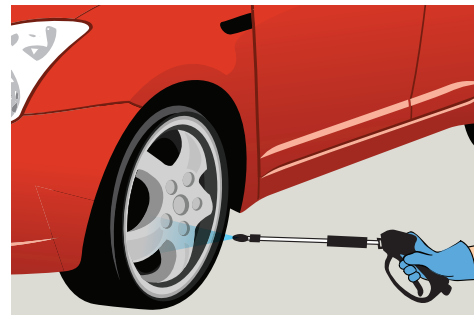
**2** Pour the product onto a brush.



**3** Brush the solution onto surface, thoroughly agitating. Start at the bottom.



**4** Allow 10 minutes contact time or longer for stubborn tarnishing.



**5** Rinse off with clean water, hot or cold.

### Health & Safety

Please refer to relevant COSHH Safety Data Sheet



Scan for further product details



Contains acid, avoid contact with paintwork/body work & decorative anodised surfaces. Not suitable for magnesium alloy wheels or aircraft.